



—*est. 2011*—

THE
BEAUTY
BRAND

PROFESSIONAL KERATIN BASED
EYELASH LIFTING SYSTEM

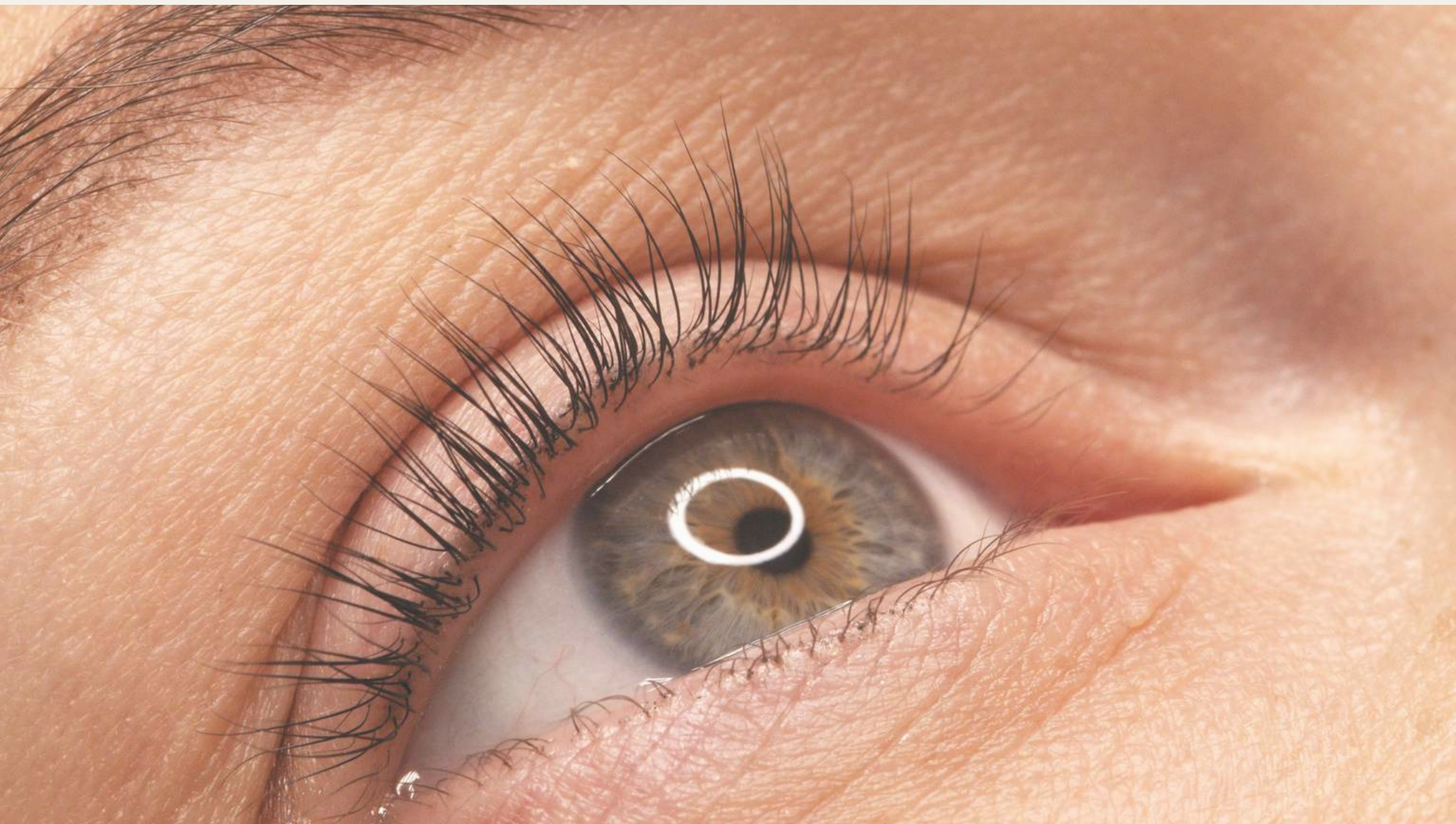
WWW.THEBEAUTYBRAND.CO.ZA



I use a Professional Keratin Based Eyelash lifting system which is a fantastic treatment for your natural eyelashes and a great alternative to eyelash extensions.

The system creates the Ultimate Lift, Volume and Length to natural eyelashes and the effect can last up to 6 weeks remembering that your own natural lashes renew themselves every 8 to 12 weeks.

HOW DOES EYELASH LIFTING WORK?



Lid Protection & Preparation

A halfmoon shaped, super soft gel silicone pad is gently positioned on your closed eye's eyelid.



Upper Eyelash Placement

Then your eyelashes are gently stroked into position one by one with a special solution to adhere to the silicone pad on your eyelid.



The Setting Process

With your lashes in perfect position and your eyes held gently shut, a curling solution is then applied which will provide you with your new "wide eyed look".



Patiently waiting, you'll look forward to the effects of the procedure, confident that the transformation will be gratifying. The neutralising solution prolongs your anticipation as you wait for the outcome. Your lashes are now elevated, presenting a fuller and more voluminous appearance.



BEFORE & AFTER



BEFORE & AFTER



BEFORE & AFTER



BEFORE & AFTER



How long does a lash lifting treatment last?

Anything from 6 to 8 weeks.

Can I swim with my new "lashes"?

Yes, you may. They are your natural lashes with a curl!

May I still use mascara?

Yes, you may use mascara, but in most cases, and depending on the thickness of your natural lashes, you may not have to.

Is the lash-lifting process painful?

No, not at all. You may experience slight discomfort keeping your eyes shut during the process, but you could use this time to catch some zzzs.

Is there any maintenance?

None at all. There's nothing special to be done. Just go out and be your gorgeous self.

Can I book this on the same day as a facial?

Definitely yes.

Can I wear my contact lenses during the treatment?

Unfortunately, these will have to be removed before the treatment; they can be worn again 24 hours after the treatment.

How often can eyelash lifting be repeated?

Every 6 - 8 weeks is safe. I will keep a record of your treatments.

How long does the treatment take?

It takes about 45 - 60 minutes.

Who shouldn't do eyelash lifting?

Chronic dry eye | Conjunctivitis | Damaged lashes or lashes with gaps | Anyone with existing lash extensions | Active eye infections of any kind | Trichotillomania (habitual lash pulling) | Recent Chemotherapy treatments

Eyelash lifting aftercare

Avoid rubbing your eyes | Avoid hot water/steam for 24 hours | Avoid replacing contact lenses for 24 hours | Avoid heat treatments for 24 hours | Avoid sun tanning for 24 hours, as this will fade the tint | Do not apply makeup or receive any other eye treatments for 24 hours

PRICE LIST

Lash Lift & Tint

R450

Lash Lift & Tint + Brow Shape & Tint

R650

Lash Tint

R180

Lash Tint + Brow Shape & Tint

R350

Brow Shape & Tint

R250

Bushy Brow Shape & Tint

R350



TO BOOK YOUR APPOINTMENT

WWW.THEBEAUTYBRAND.CO.ZA/BOOK-APPOINTMENT

OR

WHATSAPP - 083 447 5409